

2.4 Parklands and Recreational Facilities

This section presents an inventory of publicly owned parks and recreation areas in the DART Rail to Rowlett Study Area. Effects on parks and other recreational facilities are governed by the criteria of “use” or “taking” as contained in *Chapter 26, Protection of Public Parks and Recreational Lands*, of the *Texas Parks and Wildlife Code*. Chapter 26 prohibits an agency of the state from approving any project that requires the use of or taking from a protected resource unless that agency has determined that there is no feasible and prudent alternative to the use or taking or that the project includes all reasonable efforts at minimizing harm resulting from the use or taking.

Chapter 26 of the *Texas Parks and Wildlife Code* is similar in its requirements to Section 4(f) of the United States *Department of Transportation (DOT) Act of 1966*, which is applicable to federally-funded transportation projects, except that Section 26.002 of the Texas law requires a public hearing on any taking of public parkland. Chapter 26 applies to all DART rail projects. Both require that prudent and feasible alternatives to using protected land be fully evaluated, and that the project include all possible planning to minimize harm to the protected resource resulting from use.

2.4.1 Resource Inventory

An inventory of parklands and bicycle trails within the study area is described in this section. Ten public parks and two pedestrian/bicycle trails are located in DART Rail to Rowlett Study Area. **Table 2-12** and **Figure 2-13** illustrate and identify parklands and bicycle trails.

Table 2-12: DART Rail to Rowlett Study Area Parks

Resource	Location	Description and Features	Size	Ownership
Heritage Park	200 Museum Plaza	Two museums and two historical buildings	0.80 acres	City of Garland
Lou Huff Park	601 E. Avenue B	Softball field, tennis court, trails	14 acres	City of Garland
Virgil M. Douglas	420 Carver Street	Playground, picnic facility	4 acres	City of Garland
WM. H. Bradfield	1220 Castle Drive	Recreation center, swimming pool, baseball fields, tennis courts, soccer fields, playground, picnic facilities	48 acres	City of Garland
George W. James	1213 Highmeadow Drive	Playground, picnic facilities	6 acres	City of Garland



Table 2-12: DART Rail to Rowlett Study Area Parks (Continued)

Resource	Location	Description and Features	Size	Ownership
Tuckerville Park	1801 SH 66	Undeveloped	62.5 acres	City of Garland
Rowlett Creek Greenbelt	2525 Castle Drive	Picnic facilities, trails	94 acres	City of Garland
Dallas Off-Road Bicycle Association (DORBA) trails	2525 Castle Drive	Picnic facilities, trails	12 miles	City of Garland
Pedestrian/bicycle Trail	Miller Street and Dexham Road	On-road and off-road trails	6 miles	City of Rowlett
Springfield Park	5501 Antioch Drive	Baseball field, soccer fields, disc golf, playground, picnic facilities	117 acres	City of Rowlett
Katy Railroad Park	University Drive	Soccer field, baseball fields	16 acres	City of Rowlett
Herfurth Park	4601 Centennial Drive	Baseball fields, tennis courts, skate park, playground, in-line hockey rink	24 acres	City of Rowlett

Sources: City of Rowlett, 2006; City of Garland, 2006

Heritage Park: Heritage Park is located east of Garland City Hall at 200 Museum Plaza. The park is adjacent to the existing railroad. The Santa Fe Railroad Depot Museum, the Lyles House and the Pace House are located within the park. The Garland Landmark Museum, also located within the park, was renovated in 1972 to house memorabilia of the City of Garland history.

Virgil M. Douglas Park: Virgil M. Douglas Park, located at 420 Carver Street, is in the Coopers Neighborhood, south of the proposed DART Rail to Rowlett Alignment. The park features playground facilities, picnic tables, and a short trail.

Lou Huff Park: Lou Huff Park is located at 515 East Avenue B, just north of SH 66. A softball field, a tennis court, and a playground are located in the park area.

WM. H. Bradfield Park: W.M. H. Bradfield Park, a 48-acre sports and playground complex, is located at 1220 Castle Drive. The park features a swimming pool, four baseball fields, two tennis courts, two soccer fields, picnic areas, and a playground.

George W. James Park: George W. James Park is located at 1213 High Meadow Drive in the Mill Creek Crossing Neighborhood. The park contains a playground and a picnic table for residents.



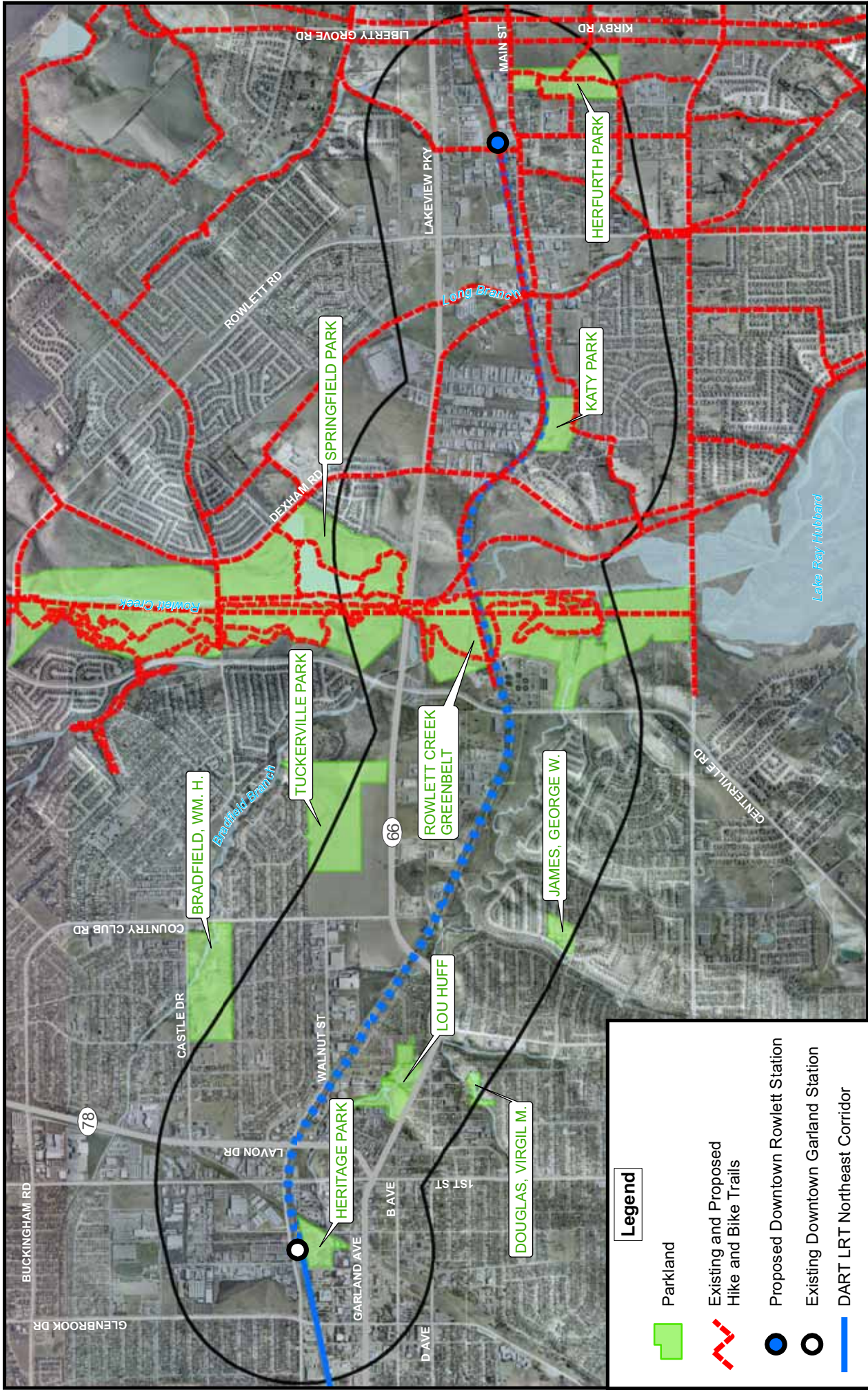









Figure 2-13
Parklands
 DART Rail to Rowlett LEA

Legend

-  Parkland
-  Existing and Proposed Hike and Bike Trails
-  Proposed Downtown Rowlett Station
-  Existing Downtown Garland Station
-  DART LRT Northeast Corridor
-  DART Rail to Rowlett
-  Half-Mile Study Area

Data Source: Aerials - NCTCOG, 2006;
 Parks and Trails - City of Rowlett, City of Garland, DORBA.

Tuckerville Park: Tuckerville Park is located at 1801 SH 66, north of the proposed DART Rail to Rowlett Alignment. The undeveloped park is east of West State Street and north of West Avenue B. Trees encompasses the park.

Rowlett Creek Greenbelt: The Rowlett Creek Greenbelt is located within the Rowlett Creek floodplain area at 2525 Castle Drive. The access point for the Greenbelt is at State Highway 190 and Castle Drive. The Greenbelt features picnic areas and off-road trails. The trails are maintained by DORBA.

DORBA Trail: DORBA builds and maintains off-road bicycle trails in the DFW region. The Rowlett Creek Greenbelt trail passes under the existing rail in two locations. The DORBA trail loops a total of 12 miles in the park area and extends as far south as Miller Road and north beyond State Highway 190.

Springfield Park: Springfield Park lies adjacent to Rowlett Greenbelt Park at 5501 Antioch Drive in Rowlett. The park is just east of the Springfield Neighborhood. The 117-acre park features a baseball field, soccer fields, disc golf, a playground, and picnic areas. The Rowlett Angel League and the Texas Heat semi-pro football team play and practice at the park.

Pedestrian/Bicycle Trail: This on-street and off-street trail reaches Rowlett Road in the Springfield Neighborhood and extends south through the Springfield Park and Rowlett Creek Greenbelt. The trail crosses under the proposed DART Rail to Rowlett Alignment and runs along Dexham Road and Miller Street. Rest stops are available at some off-street locations.

Katy Railroad Park: Katy Railroad Park lies adjacent to the ROW, on the south side of the proposed DART Rail to Rowlett Alignment at University Drive. The 16-acre park includes a practice soccer field and two baseball fields. Development is ongoing for recreational facilities in the park.

Herfurth Park: Herfurth Park is located at 4601 Centennial Drive, southeast of the proposed DART Downtown Rowlett LRT Station. The 24-acre park includes baseball fields, tennis courts, and a skate park. There are also picnic areas, a playground, a wiffleball field, and an in-line hockey rink.

In addition, several governing bodies have future plans for parks and trails in the DART Rail to Rowlett Study Area. The Garland Parks and Recreation Department has plans for trail expansion in the Rowlett Creek Greenbelt in conjunction with DORBA and the Dallas County Parks and Open Space Program. The Dallas County Parks and Open Space Program acquires and preserves environmentally unique properties which are maintained by the cities they occupy. The Rowlett Department of Parks and Recreation has acquired several sites of undeveloped parkland to be developed in the future. However, none of these sites are located within the study area. NCTCOG has created a future regional veloweb in the area, which is a public information resource of existing, programmed, and planned bicycle and pedestrian routes in the region. NCTCOG is not responsible for actual construction or maintenance. The NCTCOG regional veloweb is concentrated in Garland along Rowlett Creek and major roadways.

